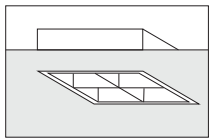
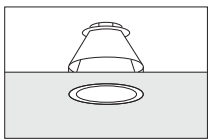


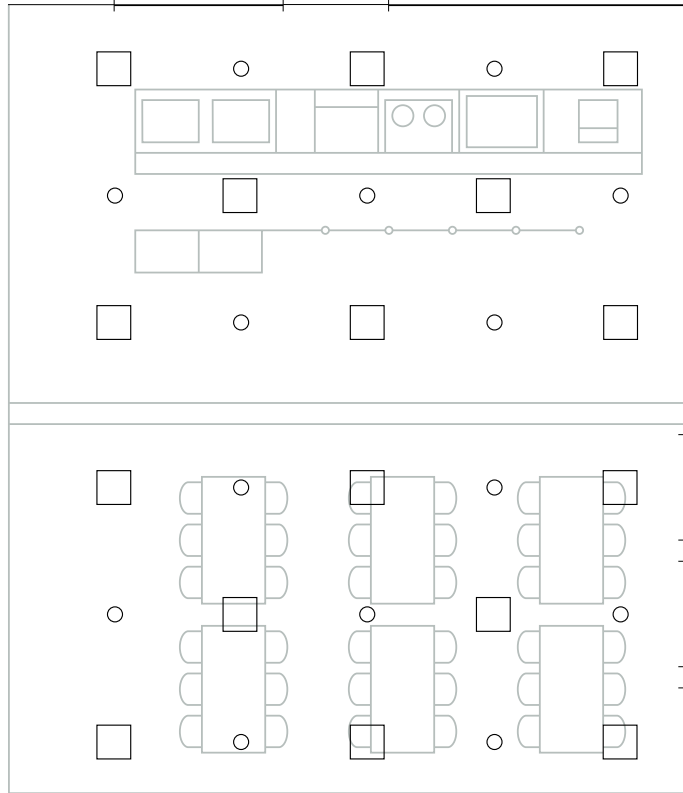
A staggered arrangement of square louvred luminaires equipped with compact fluorescent lamps provide efficient ambient lighting. A series of recessed downlights for halogen lamps arranged alternately between the louvred luminaires create a prestigious atmosphere. The louvred luminaires and the downlights can be switched separately or in unison.



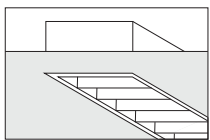
Recessed louvred luminaire for compact fluorescent lamps.



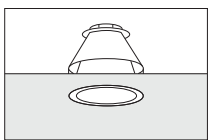
Recessed downlight for halogen lamps.



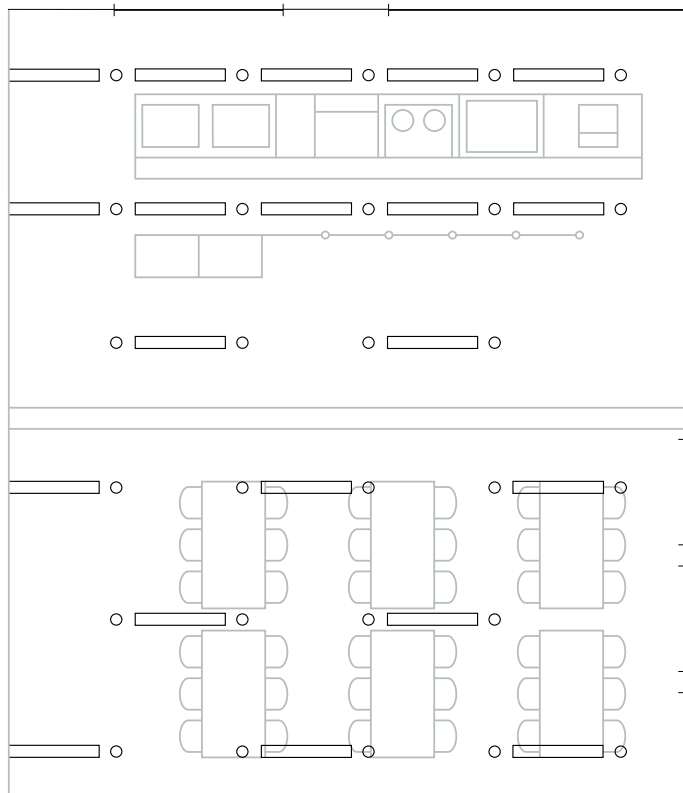
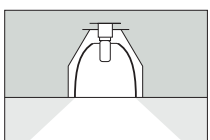
A combination of fluorescent and halogen lighting. The fixtures used are louvred luminaires equipped with conventional fluorescent lamps and arranged in parallel rows throughout the space. The counter area is accentuated by positioning the luminaires closer together.



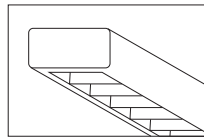
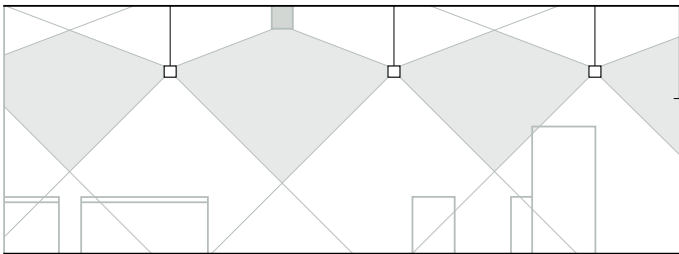
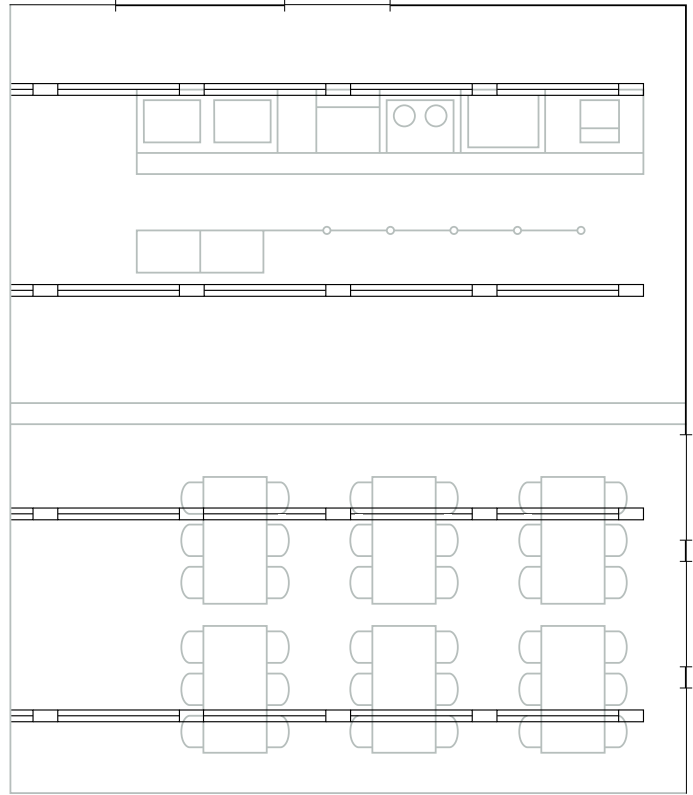
Recessed louvred luminaire for fluorescent lamps.



Recessed downlight for halogen lamps.



Efficient, uniform lighting of the canteen is achieved by direct-indirect luminaires equipped with fluorescent lamps and mounted on a suspended light structure arranged in parallel rows throughout the space.



Suspended light structure with direct-indirect luminaires for fluorescent lamps.

